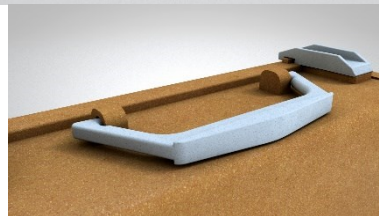


## DATASHEET

Code	CAV463
Product name.	Futura Box



### FEATURES

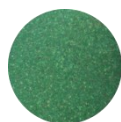
Size (L x P x H): 250 x190x90 mm

Case made of Compound PP/ Wood Flour (WPC-Wood Plastic Compound) with vegetable charges between 30-40%; equipped with wall support, transport handle and closure with 2 rotating clips.

### Available colors



Orange  
CAV460



Green  
CAV461



Wood  
CAV463



White  
CAV462

## TECHNICAL DATA SHEET

### PLASTIC WOOD COMPOUND PP30 SCD

#### **General information:**

Compound PP/Wood Flour (WPC-Wood Plastic Compound) containing between 30 % and 40 % of wood fillers.

High degree of fluidity for injection molding of parts with thicknesses even less than 3 mm; excellent overall balance of mechanical and thermal properties, high impact resistance.

#### **Suggested conditions:**

For drying process, it is recommended to keep the material at 100 °C for at least 7 hours and subsequently to dehumidify it for 7 hours. For a better aesthetic appearance the moisture content before the molding process must be less than 0.05 %, in order to avoid surface grains and flow marks due to possible residual moisture.

Molding suggested conditions: temperature of the press head at about 160 °C, temperature near the nozzle at 175/180 °C, die temperature at 40 - 60 °C, medium - high injection speed; it is recommended to maintain the temperature of the screw around 160/165 °C because the frictioning material may overheat. Any temperature higher than 190/200 °C could cause degradation, darkening or combustion of the wood flour.

#### **Physical properties:**

Specific gravity at 23 °C	ISO 1183	g/cm <sup>3</sup>	1.067
MVR - Melt Volume Rate (190/10)	ISO 1133	cm <sup>3</sup> /10'	62
Water absorption	D1037(ASTM)	%	<1

#### **Mechanical properties:**

Flexural Modulus	ISO 178/A/2	MPa	2458
Flexural Yield strength		MPa	49
Tensile Modulus	ISO 527-2/1A/1	MPa	1421
Tensile strength at break		MPa	28
Elongation at break		%	6
Charpy unnotched impact test at 23 °C	ISO179-1 1 e U	KJ/m <sup>2</sup>	16

plasticWOOD.it s.r.l.